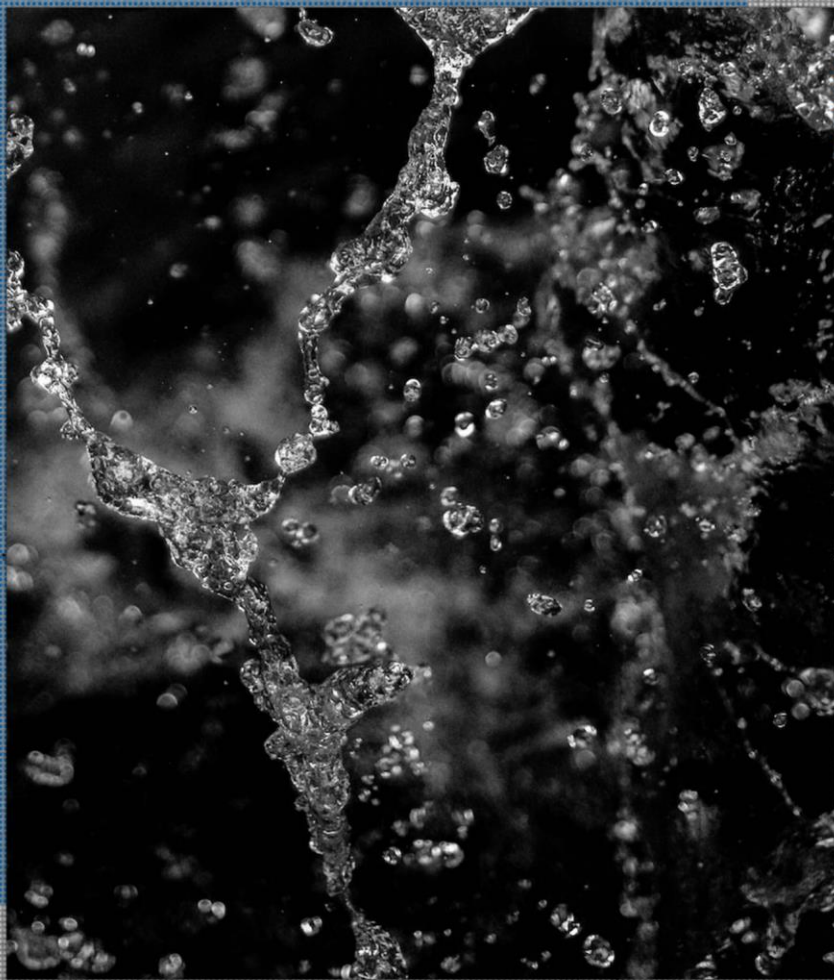


RUKKA SS25

rukka[®] SHOES





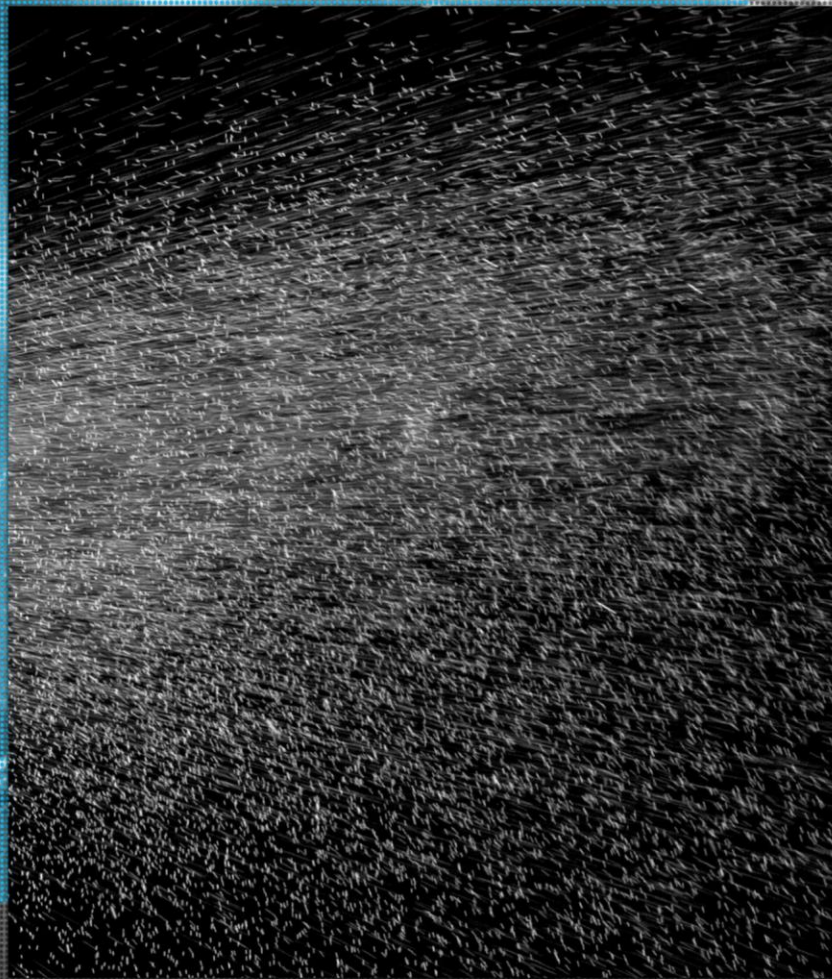
A.W.S.



WATERPROOF

A.W.S. WATERPROOF footwear blocks out water completely. The waterproof membrane construction with taped seams provides 360° protection from rain and all other moisture.

Next to the waterproof membrane, there is a porous foam layer, which enables the evaporation of the moisture. Closest to the foot, there is a pleasantly soft polyamide lining that provides comfort with every step.



A.W.S.



WATER-RESISTANT

A.W.S. WATER-RESISTANT footwear has been treated with a hydrophobic finish that prevents light drizzle and moisture from entering the shoe.

The water-resistant treatment also enables the upper materials to dry faster.

A.W.S. R8.0 RUNNING OUTSOLE

Introducing our most running-centric sole to date, the A.W.S. R8.0. This sport specific midsole + outsole combo is designed from the ground up to keep your feet feeling fresh, no matter the tempo. How it's different – it has a little more of everything – both in performance and ride characteristics.

The midsole is having layered design, so the geometry is split in two parts. EVA midsole top layer is made of firmer foam compound, to provide stability and guidance during running gait. The softer bottom EVA layer ensures great cushioning without sacrificing energy return - everything you need to perform at your best.



HIGH ABRASION RUBBER ZONES

Hard wearing outsole rubber is placed into areas which face the most wear and tear

MIDSOLE RECESSES

Cutouts in the midsole material are for improved flexibility, as well as for weight saving

TARGETED TRACTION

The rubber outsole is equipped with micro texture for enhanced traction

HEEL GEOMETRY

Unique design providing a smooth sensation whether your foot initially strikes the ground tilted inward or outward

OUTSOLE

Rubber

MIDSOLE

EVA

DROP

5mm



RUKKA FOOTWEAR SS25

RUKKA RAISIO MR 7 78 445 120 R



MEN



223

990

RUKKA REHTI MR 7 78 440 120 R



980

990

RUKKA RENTO MR 7 78 439 120 R



981

991

RUKKA RAAHE MR 7 78 414 120 R



MEN



990

RUKKA RANUA MR 7 78 415 120 R



990

RUKKA RUBIO X MR 7 78 421 120 R



990

RUKKA RUBI X MR 7 78 422 120 R



990

RUKKA RAUTIO MR 7 78 475 120 R



990



A.W.S. WATERPROOF



A.W.S. WATER-RESISTANT

RUKKA FOOTWEAR SS25

RUKKA RAISIO MS 7 75 445 120 R



WOMEN

RUKKA RAAHE MS 7 75 414 120 R



WOMEN



115

990



990

RUKKA REHTI MS 7 75 440 120 R



RUKKA RANUA MS 7 75 415 120 R



980

990



990

RUKKA RENTO MS 7 75 439 120 R



RUKKA RUBIO X MS 7 75 421 120 R



981

991



990

RUKKA RUBI X MS 7 75 422 120 R



A.W.S. WATERPROOF



A.W.S. WATER-RESISTANT

RUKKA RAUTIO MS 7 75 475 120 R



990

MEN

RUKKA RAISIO MR

7 78 445 120 R

DELIVERY WEEK: 8-11



395 g

WEIGHT



40-49

SIZE



10,7 mm / 13,7 mm

DROP

Empowering you to log your miles no matter the weather, our new running shoe boasts A.W.S. WATERPROOF technology and weather-ready outsole traction. Upper mesh fabric keeps the overall weight in check, and the midsole is designed to provide protective cushion while maintaining a responsive toe-off for when you want to go further, faster.

TECH INFO

Upper: Textile mesh, TPU coating
Lining: Textile mesh
Insole: Honeycomb moulded EVA, Textile mesh
Midsole: EVA
Outsole: Rubber



A.W.S. WATERPROOF



A.W.S. COOLNET PRO

SPORT
SPECIFIC



223
GREY



990
BLACK

A.W.S. WATERPROOF

MEN

RUKKA REHTI MR

7 78 440 120 R

DELIVERY WEEK: 8-11



350 g

WEIGHT



40-49

SIZE



10,7 mm / 13,7 mm

DROP

Thanks to the layered midsole design with energized foam compounds, this **running** shoe is ready for take-off. Reworked with a premium performance knit for improved fit, this endurance workhorse is finished with bold colouring for a statement-making finish.

TECH INFO

Upper: Knitting, TPU coating
Lining: Flyknit
Insole: Honeycomb moulded EVA, Textile mesh
Midsole: EVA
Outsole: Rubber

**SPORT
SPECIFIC**



A.W.S. COOLNET PRO



980 WHITE



990 BLACK

MEN

RUKKA RENTO MR

7 78 439 120 R

DELIVERY WEEK: 8-11



355 g

WEIGHT



40-48

SIZE



8 mm / 11 mm

DROP

Complete with light, responsive midsole foam, these shoes have lightweight knitted **water-resistant** upper with targeted areas of support and breathability; everything you need to for security and comfort. Tread on the outsoles provides traction for multitude of surfaces. Reflective yarns are spread all across the upper knit.

TECH INFO

Upper: Knitting, TPU coating
Lining: Textile elastane
Insole: Honeycomb moulded EVA, Textile mesh
Midsole: EVA
Outsole: Rubber



A.W.S. WATER-RESISTANT



A.W.S. COOLNET MESH

SPORTSWEAR



981 WHITE



991 BLACK

A.W.S. WATER-RESISTANT

MEN

RUKKA RAAHE MR

7 78 414 120 R

DELIVERY WEEK: 8-11



495 g

WEIGHT



40-47

SIZE



16,3 mm / 19,3 mm

DROP

During long bouts in the wild, comfort is often priority number one in the mind. Totally new design with carefully thought-out details, this **hybrid** shoe is the ultimate gateway to the great outdoors. Featuring a hefty stack of soft midsole foam and higher collar for improved protection and support, look no further when you need a shoe that can do it all.

TECH INFO

Upper: Knitting, TPU coating, Synthetic PU
Lining: Textile elastane
Insole: Honeycomb moulded EVA, Textile mesh
Midsole: EVA
Outsole: Rubber



A.W.S. WATERPROOF



A.W.S. COOLNET MESH

HYBRID FOOTWEAR



990 BLACK

A.W.S. WATERPROOF

MEN

RUKKA RANUA MR

7 78 415 120 R

DELIVERY WEEK: 8-11



465 g

WEIGHT



40-47

SIZE



16,3 mm / 19,3 mm

DROP

This beast of a shoe has everything you need for enhanced performance. Completely reworked design is ready to turn heads, with integrated overlays on hard-wearing areas for full protection. The aggressive outsole tread, paired with fully waterproof construction guarantees this shoe is made for exploring.

TECH INFO

Upper: Knitting, TPU coating, Synthetic PU
Lining: Textile elastane
Insole: Honeycomb moulded EVA, Textile mesh
Midsole: EVA
Outsole: Rubber



A.W.S. WATERPROOF



A.W.S. COOLNET MESH

HYBRID FOOTWEAR



990 BLACK

A.W.S. WATERPROOF

MEN

RUKKA RUBIO X MR

7 78 421 120 R

DELIVERY WEEK: 8-11



492 g

WEIGHT



40-48

SIZE



9,4 mm / 12,4 mm

DROP

Go further and explore more, rain or shine. Hard-wearing materials add to the overall durability, whereas heel counter enhances stability on uneven ground. The collar reaches up higher to support the ankle, providing formfitting comfort.

A true **hybrid** of versatility and protection.

TECH INFO

Upper: Textile polyamide, Textile fabric, TPU coating, Rubber
Lining: Textile mesh
Insole: Honeycomb moulded EVA, Textile mesh
Midsole: Phylon
Outsole: Rubber



A.W.S. WATERPROOF



A.W.S. COOLNET MESH

HYBRID FOOTWEAR



990 BLACK

A.W.S. WATERPROOF

MEN

RUKKA RUBI X MR

7 78 422 120 R

DELIVERY WEEK: 8-11



388 g

WEIGHT



40-48

SIZE



9,4 mm / 12,4 mm

DROP

Low-slung and rugged, this **hybrid** style combines lightweight, waterproof construction with a sneaker-like feel for everyday wear. Durable toe cap and heel counter are made for harsh terrain, whereas outsole offers long-lasting cushioning, energy return and high adaptability on different surfaces.

TECH INFO

Upper: Textile polyamide, Textile fabric, TPU coating, Rubber
Lining: Textile mesh
Insole: Honeycomb moulded EVA, Textile mesh
Midsole: Phylon
Outsole: Rubber



A.W.S. WATERPROOF



A.W.S. COOLNET MESH

HYBRID FOOTWEAR



990 black

A.W.S. WATERPROOF

RUKKA RAUTIO MR

7 78 475 120 R

DELIVERY WEEK: 8-11



g

40-46

WEIGHT

SIZE

Don't let a few puddles slow you down. With our newly designed rain boots, you'll be ready to get out in wet weather on any day of the year. Thanks to the warm lining, you can bet on these boots even on a bit chiller days. Ergonomic last construction provides stability and support.



990 black

TECH INFO

Upper:	Rubber
Lining:	Cotton jersey
Insole:	Honeycomb moulded EVA, Textile mesh
Outsole:	Rubber

SPORTSWEAR



WOMEN

RUKKA RAISIO MS

7 75 445 120 R

DELIVERY WEEK: 8-11



345 g

WEIGHT



36-42

SIZE



10,7 mm / 13,7 mm

DROP

Empowering you to log your miles no matter the weather, our new running shoe boasts A.W.S. WATERPROOF technology and weather-ready outsole traction. Upper mesh fabric keeps the overall weight in check, and the midsole is designed to provide protective cushion while maintaining a responsive toe-off for when you want to go further, faster.

TECH INFO

- Upper: Textile mesh, TPU coating
- Lining: Textile mesh
- Insole: Honeycomb moulded EVA, Textile mesh
- Midsole: EVA
- Outsole: Rubber



A.W.S. WATERPROOF



A.W.S. COOLNET PRO

SPORT
SPECIFIC



115 BEIGE



990 BLACK

A.W.S. WATERPROOF

WOMEN

RUKKA REHTI MS

7 75 440 120 R

DELIVERY WEEK: 8-11



305 g

WEIGHT



36-42

SIZE



10,7 mm / 13,7 mm

DROP

Thanks to the layered midsole design with energized foam compounds, this **running** shoe is ready for take-off. Reworked with a premium performance knit for improved fit, this endurance workhorse is finished with bold colouring for a statement-making finish.

TECH INFO

Upper: Knitting, TPU coating
Lining: Flyknit
Insole: Honeycomb moulded EVA, Textile mesh
Midsole: EVA
Outsole: Rubber



A.W.S. COOLNET PRO

SPORT
SPECIFIC



980 WHITE



990 BLACK

WOMEN

RUKKA RENTO MS

7 75 439 120 R

DELIVERY WEEK: 8-11



280 g

WEIGHT



36-42

SIZE



8 mm / 11 mm

DROP

Complete with light, responsive midsole foam, these shoes have lightweight knitted **water-resistant** upper with targeted areas of support and breathability; everything you need to for security and comfort. Tread on the outsoles provides traction for multitude of surfaces. Reflective yarns are spread all across the upper knit.

TECH INFO

Upper: Knitting, TPU coating
Lining: Textile elastane
Insole: Honeycomb moulded EVA, Textile mesh
Midsole: EVA
Outsole: Rubber



A.W.S. WATER-RESISTANT



A.W.S. COOLNET MESH

SPORTSWEAR



981 WHITE



991 BLACK

A.W.S. WATER-RESISTANT

WOMEN

RUKKA RAAHE MS

7 75 414 120 R

DELIVERY WEEK: 8-11



380 g

WEIGHT



36-42

SIZE



16,3 mm / 19,3 mm

DROP

During long bouts in the wild, comfort is often priority number one in the mind. Totally new design with carefully thought-out details, this **hybrid** shoe is the ultimate gateway to the great outdoors. Featuring a hefty stack of soft midsole foam and higher collar for improved protection and support, look no further when you need a shoe that can do it all.



990 BLACK

TECH INFO

Upper: Knitting, TPU coating, Synthetic PU
Lining: Textile elastane
Insole: Honeycomb moulded EVA, Textile mesh
Midsole: EVA
Outsole: Rubber



A.W.S. WATERPROOF



A.W.S. COOLNET MESH

HYBRID FOOTWEAR

A.W.S. WATERPROOF

WOMEN

RUKKA RANUA MS

7 75 415 120 R

DELIVERY WEEK: 8-11



350 g

WEIGHT



36-42

SIZE



9,4 mm / 12,4 mm

DROP

This beast of a shoe has everything you need for enhanced performance. Completely reworked design is ready to turn heads, with integrated overlays on hard-wearing areas for full protection. The aggressive outsole tread, paired with fully waterproof construction guarantees this shoe is made for exploring.

TECH INFO

Upper: Knitting, TPU coating, Synthetic PU
Lining: Textile elastane
Insole: Honeycomb moulded EVA, Textile mesh
Midsole: EVA
Outsole: Rubber



A.W.S. WATERPROOF



A.W.S. COOLNET MESH

HYBRID FOOTWEAR



990 BLACK

A.W.S. WATERPROOF

WOMEN

RUKKA RUBIO X MS

7 75 421 120 R

DELIVERY WEEK: 8-11



350 g

WEIGHT



36-42

SIZE



9,4 mm / 12,4 mm

DROP

Go further and explore more, rain or shine. Hard-wearing materials add to the overall durability, whereas heel counter enhances stability on uneven ground. The collar reaches up higher to support the ankle, providing formfitting comfort.

A true **hybrid** of versatility and protection.

TECH INFO

Upper:	Textile polyamide, Textile fabric, TPU coating, Rubber
Lining:	Textile mesh
Insole:	Honeycomb moulded EVA, Textile mesh
Midsole:	Phylon
Outsole:	Rubber



A.W.S. WATERPROOF



A.W.S. COOLNET MESH

HYBRID FOOTWEAR



990 BLACK

A.W.S. WATERPROOF

WOMEN

RUKKA RUBI X MS

7 75 422 120 R

DELIVERY WEEK: 8-11



290 g

WEIGHT



36-42

SIZE



9,4 mm / 12,4 mm

DROP

Low-slung and rugged, this **hybrid** style combines lightweight, waterproof construction with a sneaker-like feel for everyday wear. Durable toe cap and heel counter are made for harsh terrain, whereas outsole offers long-lasting cushioning, energy return and high adaptability on different surfaces.

TECH INFO

Upper: Textile polyamide, Textile fabric, TPU coating, Rubber
Lining: Textile mesh
Insole: Honeycomb moulded EVA, Textile mesh
Midsole: Phylon
Outsole: Rubber



A.W.S. WATERPROOF



A.W.S. COOLNET MESH

HYBRID FOOTWEAR



990 BLACK

A.W.S. WATERPROOF

WOMEN

RUKKA RAUTIO MS

7 75 475 120 R

DELIVERY WEEK: 8-11



g

WEIGHT



36-42

SIZE

Don't let a few puddles slow you down. With our newly designed rain boots, you'll be ready to get out in wet weather on any day of the year. Thanks to the warm lining, you can bet on these boots even on a bit chiller days. Ergonomic last construction provides stability and support.



990 black

TECH INFO

Upper:	Rubber
Lining:	Cotton jersey
Insole:	Honeycomb moulded EVA, Textile mesh
Outsole:	Rubber

SPORTSWEAR

