



JUNIOR - SPRING /// SUMMER 2025



IT'S OUT THERE

ICEPEAK LOWDEN JR

7 50 206 521

G SHELL JACKET

Size: 116-176, BL: 57 cm

Materials: 100% PES (W)

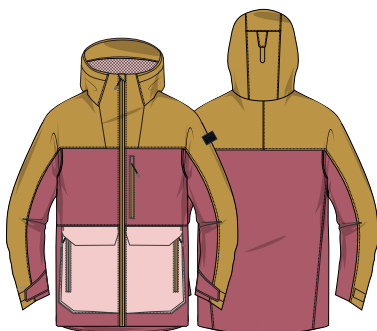
Lining: 100% PES

Features:

- Regular fit.
- Breathable mesh lining.
- Adjustable fixed hood.
- Adjustable cuffs.
- Zip with chin guard.
- Zipped chest pocket.
- Two zipped front pockets.

Delivery week: 8

Price: 69,99€



637/439/605¹
zippers col.439
mesh lining: 605



315/390/390²
zippers col.390
mesh lining: 390

ICEPEAK LUFKIN JR

7 50 205 524

JR WINDBREAKER JACKET

Size: 116-176, BL: 54 cm

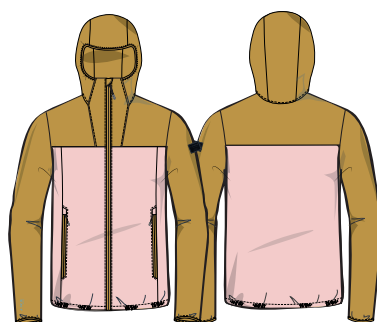
Materials: 100% PA (W)

Features:

- Regular fit.
- Elastic cuffs.
- Fixed hood.
- Elastic hem.
- Zip with chin guard.
- Two zipped front pockets.

Delivery week: 8

Price: 49,99€



605/439¹
zippers col.439



637/637²
zippers col.315

ICEPEAK KETZIN JR

7 51 893 572

JR SOFTSHELL JACKET

Size: 116-176, BL: 52 cm

Materials: 100% PES (K)

Features:

- Regular fit.
- Fixed hood.
- Two zipped front pockets.
- Elastic ribbed hem.
- Ribbed elastic cuffs.

Delivery week: 8

Price: 59,99€



635
zippers band col.635/teeth col.605
shell 635/backside 210



810
zippers band col.022/teeth col.antique silver
shell 810/backside 210



990
zippers band col.990/teeth col.antique silver
shell 990/backside 290

ICEPEAK LUTTRELL JR

7 51 203 529

JR LOOSE-FIT TROUSERS

Size: 116-176, IS: 61 cm

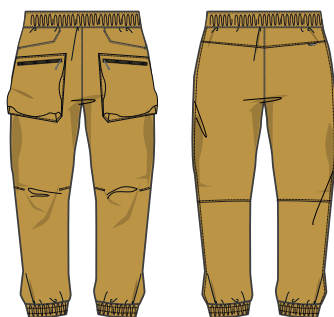
Materials: 100% PA (W)

Features:

- Loose fit
- Regular waist
- Elastic waistband
- Elastic leg bottoms
- Articulated knees
- Two zipped front pockets

Delivery week: 8

Price: 49,99€



439¹
zippers col.439



290¹
zippers col.290

ICEPEAK LACQ JR

7 51 977 625

JR MIDLAYER JACKET

Size: 110/116 - 170/176, BL: 52 cm

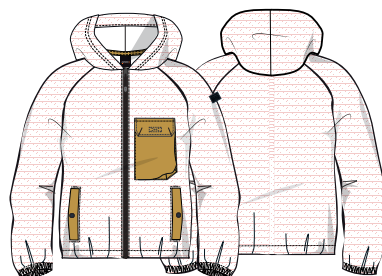
Materials: 92% PES, 8% EL (K)

Features:

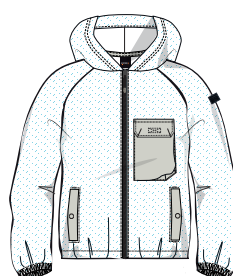
- Regular fit.
- Zip front.
- Elastic cuffs.
- Elastic hem.
- Functional pockets.

Delivery week: 8

Price: 49,99€



605/439¹
zippers band col.605 teeth col.439
shell 605/backside 980



340/022²
zippers band col.340 teeth col.022
shell 340/backside 980

THERMAL

JUNIORS / OUTDOOR CAMPING / Girls

ICEPEAK LOMITA JR

7 51 974 656

G FLEECE JACKET

Size: 110/116 - 170/176, BL: 53 cm

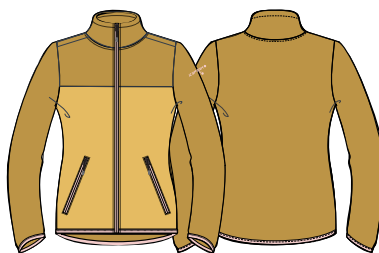
Materials: 100% recycled PES (K)

Features:

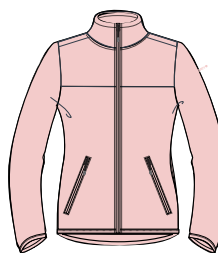
- Regular fit.
- Elastic cuffs.
- Elastic hem.
- Two zippered front pockets.

Delivery week: 8

Price: 44,99€



439/431¹
zippers col.605



605/605
zippers col.605



637/022²
zippers col.315

RECYCLED MATERIALS

THERMAL

ICEPEAK LEADVILLE JR

7 51 671 514

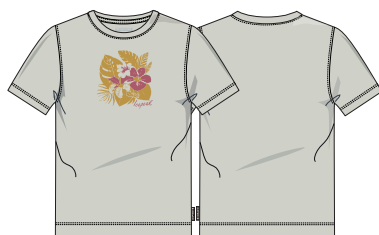
JR T-SHIRT

Size: 110/116 - 170/176, BL: 55cm

Materials: 100% CO

Delivery week: 8

Price: 12,99€



022¹



605



637¹



939=390²

ICEPEAK LAMONI JR

7 51 530 625

G SHORTS

Size: 110/116 - 170/176, IS: 8 cm

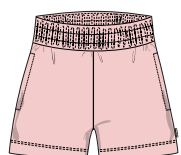
Materials: 92% PES, 8% EL (K)

Delivery week: 8

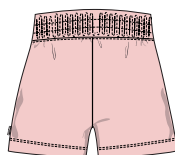
Price: 29,99€

Features:

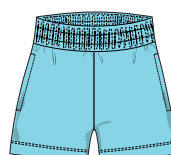
- Regular fit.
- Two front pockets.



605¹



340²



ICEPEAK KALKASKA JR

7 50 010 521

G SHELL JACKET

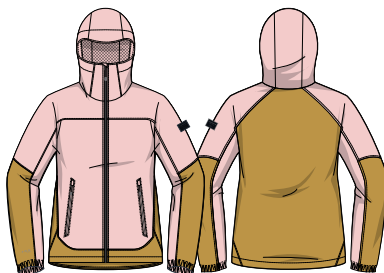
Size: 116-176, BL: 56 cm
Materials: 100% PES (W)
Lining: 100% PES

Features:

- Regular fit
- Shaped hem
- Articulated elbows
- Fixed hood
- Adjustable hood
- Elastic cuffs
- Two zipped front pockets
- Zipped chest pocket
- Chin guard on the front zip
- Breathable mesh lining

Delivery week: 8

Price: 49,99€



605/439¹
front zippers col.990
pocket zippers col.605
mesh lining: 605



390/315²
front zippers col.990
pocket zippers col.390
mesh lining: 315



637/637
front zippers col.990
pocket zippers col.637
mesh lining: 637



990/990
front zippers col.990
pocket zippers col.990
mesh lining: 990

ICEPEAK KETCHIKAN JR

7 50 016 501

G SHELL JACKET

Size: 116-176cm , BL: 54 cm
Materials: 100% PES (W)
Lining: 100% PES

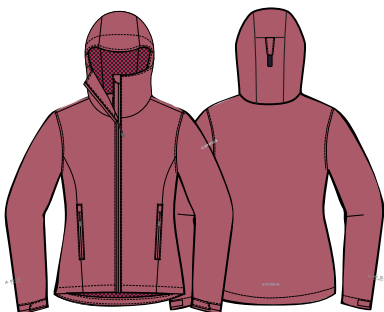
Features:

- Regular fit
- Shaped hem
- Fixed hood
- Adjustable hem
- Adjustable cuffs
- Two zipped front pockets
- Wind placket
- Chin guard on the front zip
- Breathable mesh lining

Delivery week: 8

Price: 69,99€

Same as S5/ SS 2024



637¹
reversed zips: 637
mesh lining: 635



315²
reversed zips: 637
mesh lining: 637



390²
reversed zips: 390
mesh lining: 315

ICEPEAK KALAHEOR JR

7 51 806 568

G LIGHT SOFTSHELL JACKET

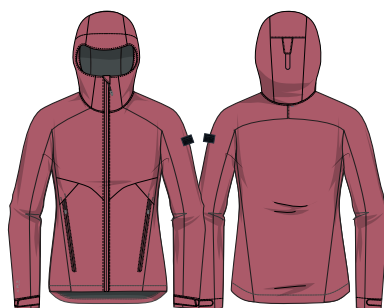
Size: 116-176, BL: 54 cm
Materials: 100% PES (W)

Features:

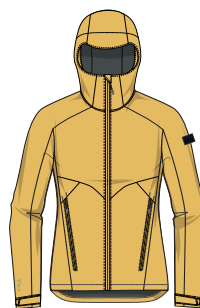
- Regular fit
- Adjustable fixed hood.
- Shaped hem
- Two zipped front pockets
- Wind placket
- Chin guard on the front zip

Delivery week: 8

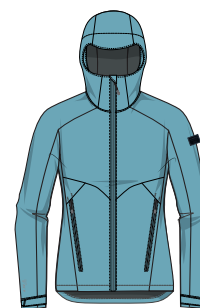
Price: 59,99€



637²
zippers col.637
shell 637/backside 270



431¹
zippers col.431
shell 431/backside 270



315¹
zippers col.315
shell 315/backside 270

ICEPEAK KAHLA JR

7 51 804 544

G SOFTSHELL JACKET

Size: 116-176, BL: 58 cm
Materials: 100% PES (W)

Features:

- Regular fit
- Detachable and adjustable hood
- Adjustable cuffs
- Two zipped front pockets
- Wind placket
- Chin guard on the front zip
- Longer and protective back hem

Delivery week: 8

Price: 69,99€



439/431¹
zippers col.439
shell 439/backside 290
shell 431/backside 605



637/637²
zippers col.637
shell 637/backside 605



939/939
zippers col.390
shell 390/backside 315

ICEPEAK KLEVE JR

7 51 896 694

7 51 896 694 IO col.990,390

G SOFTSHELL JACKET

Size: 116-176, BL: 54 cm

Materials: 100% PES (K)

Features:

- Regular fit
- Fixed hood
- Elastic cuffs
- Two zipped front pockets
- Wind placket
- Chin guard on the front zip

04

CLASSIC

Delivery week: 8

Price: I/IO:49,99€

Same as S5/ SS 2024



431¹
zippers 431
shell 431/backside 605

637
zippers 637
shell 637/backside 605

635¹
zippers 637
shell 635/backside 637

927
zippers 635
shell 275/backside 635



315²
zippers 340
shell 315/backside 340

939
zippers 315
shell 390/backside 315

963
zippers 635
shell 990/backside 635

390
zippers 390
shell 390/backside 390

990
zippers 990
shell 990/backside 290

ICEPEAK KINGSTREE JR

7 51 894 844

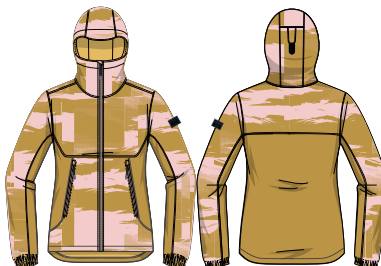
G PRINTED SOFTSHELL JACKET

Size: 116-176, BL: 55 cm

Materials: 100% PES (printed Q694) (K)

Features:

- Regular fit
- Shaped hem
- Adjustable fixed hood
- Elastic cuffs
- Two zipped front pockets
- Wind placket
- Chin guard on the front zip



439/439¹
zippers col.605
shell 439/backside 431
shell 439/backside 605



Delivery week: 8

Price: 49,99€

ICEPEAK KANEOHE JR

7 51 916 572

G STRETCH SOFTSHELL JACKET

Size: 116-176cm, BL: 52 cm

Materials: 100% PES (W)

Features:

- Regular fit
- Fixed hood
- Elastic cuffs
- Two zipped front pockets
- Zipped sleeve pocket
- Wind placket
- Chin guard on the front zip



635²
reversed sleeve pocket zip: 022
welding tape: 990
shell 635/backside 210

810¹
reversed sleeve pocket zip: 635
welding tape: 990
shell 810/backside 210

390
reversed sleeve pocket zip: 315
welding tape: 990
shell 390/backside 290



Delivery week: 8

Price: 49,99€

Same as S5/ SS 2024

ICEPEAK KABWE JR

7 51 002 542 IO

JR SOFTSHELL TROUSERS

Size: 116-176, IS: 64 cm

Materials: 97% PES, 3% EL (W)

Features:

- Regular fit.
- Regular waist.
- Adjustable waist.
- Elastic back waistband.
- Adjustable leg bottoms.
- Articulated knee construction.
- Bel loops.
- Two zipped front pockets.

04

CLASSIC

Delivery week: 8

Price: 49,99€

Same as S5/ SS 2024

KEEP SMS



390¹
pocket zip 390

KEEP SMS



990
pocket zip 990



ICEPEAK KEO JR

7 51 090 682

JR SOFTSHELL TROUSERS

Size: 116-176, IS: 62 cm

Materials: 95% PES, 5% EL (W)

Features:

- Regular fit.
- Regular waist.
- Adjustable waist.
- Elastic waistband.
- Adjustable leg bottoms.
- Articulated knee construction.

04

Delivery week: 8

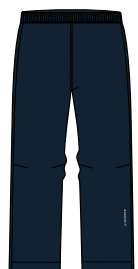
Price: 39,99€

KEEP SMS



990¹

KEEP SMS



390²



ICEPEAK LOWRY JR

7 51 204 526

G STRETCH TROUSERS

Size: 116-176, IS: 60 cm

Materials: 100% PES (W)

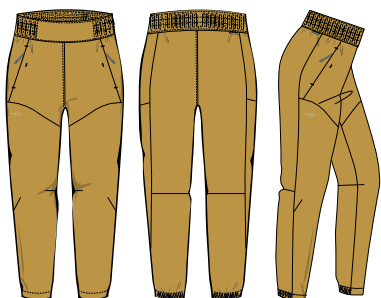
Lining: 100% PES (pocket pouches)

Features:

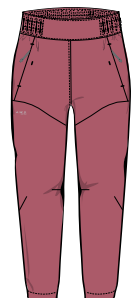
- Regular fit
- High waist
- Elastic waistband
- Articulated knees
- Two zipped front pockets
- Elastic leg bottoms

Delivery week: 8

Price: 49,99€



439¹



637



275²



ICEPEAK LOTT JR

7 51 540 526

G STRETCH SHORTS

Size: 116-176, IS: 10 cm

Materials: 100% PES (W)

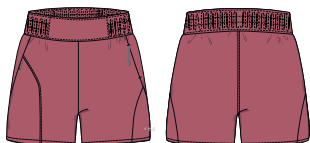
Lining: 100% PES (pocket pouches)

Features:

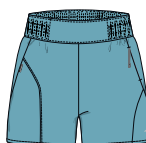
- Regular fit
- High waist
- Elastic waistband
- Zipped front pocket

Delivery week: 8

Price: 39,99€



637¹



315²



ICEPEAK KANO JR

7 51 007 522

G STRETCH ZIP-OFF TROUSERS

Size: 116-176, IS: 13 cm / 62 cm
Materials: 90% PES, 10% EL (W)

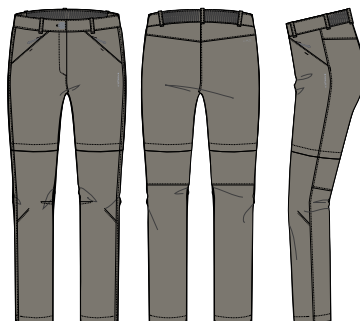
Features:

- Regular fit
- Regular waist
- Adjustable waist
- Elastic back waistband
- Adjustable leg bottoms
- Articulated knee construction
- Zip-off leg bottoms
- Two zipped front pockets.

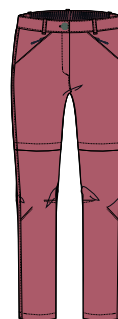
Delivery week: 8

Price: 49,99€

Same as S5/ SS 2024



275 ¹



637



390 ²

JUNIORS / OUTDOOR HIKING / Girls

ICEPEAK KIELCE JR

7 51 010 522

G STRETCH TROUSERS

Size: 116-176, IS: 62 cm
Materials: 90% PES, 10% EL (W)

Features:

- Regular fit
- Regular waist
- Adjustable waist
- Elastic back waistband
- Two zipped front pockets.
- Adjustable leg bottoms
- Articulated knee construction

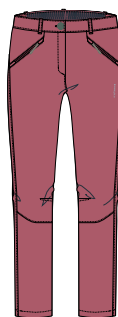
Delivery week: 8

Price: 44,99€

Same as S5/ SS 2024



390 ¹



637 ²



990

ICEPEAK KECHI JR

7 51 526 522

G STRETCH SHORTS

Size: 110-116--170-176, IS: 12 cm
Materials: 90% PES, 10% EL (W)

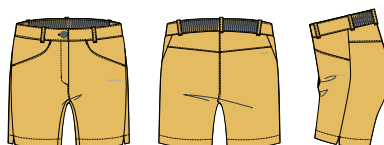
Features:

- Regular fit
- Regular waist
- Adjustable waist
- Elastic back waistband

Delivery week: 8

Price: 39,99€

Same as S5/ SS 2024



431 ¹



635 ²



315

ICEPEAK KAMENZ JR

7 51 772 615
G MIDLAYER JACKET

Size: 110/116 - 170/176, BL: 52 cm
Materials: 100% PES (K)

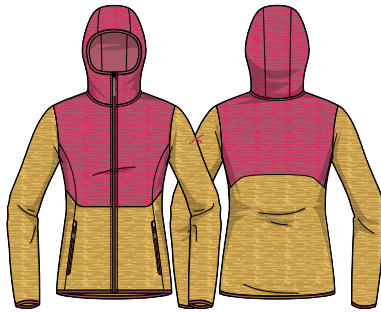
Features:

- Regular fit
- Fixed hood
- Elastic cuffs
- Elastic hem
- Two zipped front pockets
- Chin guard on the front zip

Delivery week: 8

Price: 44,99€

THERMAL



431/635¹
zippers 637
lycra bands 637



340/315
zippers 315
lycra bands 315



817/810²
zippers 210
lycra bands 210

ICEPEAK KIMBALL JR

7 51 884 599
G FLEECE JACKET

Size: 110/116 - 170/176, BL: 53 cm
Materials: 100% PES (K)

Features:

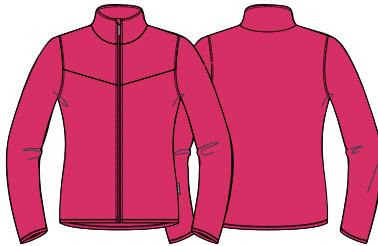
- Elastic cuffs
- Elastic hem
- Chin guard on the front zip

Delivery week: 8

Price: 29,99€

Same as S5/ SS 2024

THERMAL



635¹



340²

ICEPEAK KEMNATH JR

7 51 874 664
G MIDLAYER JACKET

Size: 110/116 - 170/176, BL: 52 cm
Materials:
Q664: 100% PES (K)
Q684: 92% PES, 8% EL (K)

Features:

- Two zipped front pockets
- Zipped sleeve pocket
- Elastic cuffs

Delivery week: 8

Price: 39,99€

Same as S5/ SS 2024

THERMAL



635/637²
body zips: 637
sleeve pocket zip: 635
elastic bindings: 637



340/315
body zips: 315
sleeve pocket zip: 635
elastic bindings: 315



022/022¹
body zips: 022
sleeve pocket zip: 635
elastic bindings: 022

ICEPEAK KERSHAW JR

7 51 779 612
JR O-NECK SHIRT

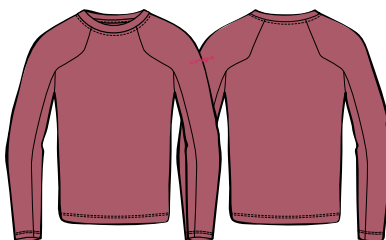
Size: 110/116 - 170/176, BL: 51 cm
Materials: 94% PES, 6% EL (K)

Features:

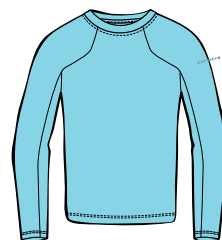
- Regular fit
- Round neck

Delivery week: 8

Price: 24,99€



637¹



340²

ICEPEAK KEARNY JR

7 51 770 689

G T-SHIRT

Size: 110/116 - 170/176, BL: 51 cm

Materials: 65% recycled PES, 35% CO (K)

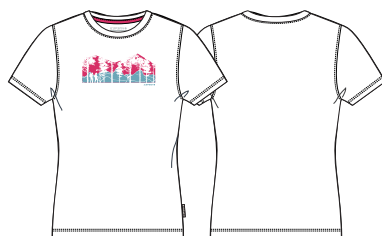
Features:

- Regular fit
- Round neck

Delivery week: 8

Price: 19,99€

Same as S5/ SS 2024
with new prints



980/635²



605/635¹



205/635¹



315/635²



390/315

JUNIORS / OUTDOOR HIKING / Girls

ICEPEAK KINSEY JR

7 51 700 590

G PIQUE SHIRT

Size: 110/116 - 170/176, BL: 51 cm

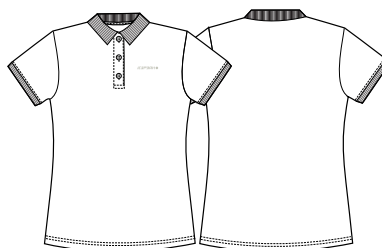
Materials: 100% recycled PES (K)

Features:

- Regular fit
- Half button front

Delivery week: 8

Price: 19,99€



980



340²



605¹

ICEPEAK KEARNEY JR

7 51 723 646

G T-SHIRT

Size: 110/116 - 170/176, BL: 51 cm

Materials: 100% PES (K)

Features:

- Regular fit
- Round neck

Delivery week: 8

Price: 12,99€

Same as S5/ SS 2024



635¹



340



390²

ICEPEAK KIVALINA JR

7 51 716 626

G T-SHIRT

Size: 110/116 - 170/176, BL: 51 cm

Materials: 100% PES (K)

Features:

- Regular fit
- Round neck

Delivery week: 8

Price: 16,99€

Same as S5/ SS 2024
with new prints



439¹



340²



635¹

ICEPEAK LASSAN JR

7 50 207 521

B SHELL JACKET

Size: 116-176, BL: 58 cm

Materials: 100% PES (W)

Lining: 100% PES

Features:

- Regular fit.
- Breathable mesh lining.
- Adjustable fixed hood.
- Adjustable cuffs.
- Zip with chin guard.
- Zipped chest pocket.
- Two zipped front pockets.

Delivery week: 8

Price: 69,99€



439/990/275¹
zippers col.990
mesh lining: 990



330/390/390
zippers col.390
mesh lining: 390

ICEPEAK LUFKIN JR

7 50 205 524

JR WINDBREAKER JACKET

Size: 116-176, BL: 54 cm

Materials: 100% PA (W)

Features:

- Regular fit.
- Elastic cuffs.
- Fixed hood.
- Elastic hem.
- Zip with chin guard.
- Two zipped front pockets.

Delivery week: 8

Price: 49,99€



022/439¹
zippers col.439



369/369²
zippers col.390

ICEPEAK KETZIN JR

7 51 893 572

JR SOFTSHELL JACKET

Size: 116-176, BL: 52 cm

Materials: 100% PES (K)

Features:

- Regular fit.
- Fixed hood.
- Two zipped front pockets.
- Elastic ribbed hem.
- Ribbed elastic cuffs.

Delivery week: 8

Price: 59,99€



330
zippers band col.330/teeth col.390
shell 330/backside 290



810
zippers band col.022/teeth col.antique silver
shell 810/backside 210



990
zippers band col.990/teeth col.antique silver
shell 990/backside 290

ICEPEAK LUTTRELL JR

7 51 203 529

JR LOOSE-FIT TROUSERS

Size: 116-176, IS: 61 cm

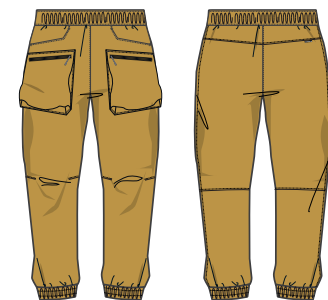
Materials: 100% PA (W)

Features:

- Loose fit
- Regular waist
- Elastic waistband
- Elastic leg bottoms
- Articulated knees
- Two zipped front pockets

Delivery week: 8

Price: 49,99€



439¹
zippers col.439



290¹
zippers col.290

ICEPEAK LACQ JR

7 51 977 625

JR MIDLAYER JACKET

Size: 110/116 - 170/176, BL: 52 cm

Materials: 92% PES, 8% EL (K)

Features:

- Regular fit.
- Zip front.
- Elastic cuffs.
- Elastic hem.
- Functional pockets.

Delivery week: 8

Price: 49,99€



439/439 ¹

zippers band col.275, teeth col.439
shell 439/backside 980



390/439 ²

zippers band col.390, teeth col.439
shell 390/backside 290

ICEPEAK LOHNE JR

7 51 975 656

B FLEECE JACKET

Size: 110/116 - 170/176, BL: 53 cm

Materials: 100% recycled PES (K)

Features:

- Regular fit.
- Elastic cuffs.
- Elastic hem.
- Two zippered front pockets.

Delivery week: 8

Price: 44,99€



330/330
zippers col.390



275/022 ¹
zippers col.275



369/369 ²
zippers col.390

ICEPEAK LEADVILLE JR

7 51 671 514

JR T-SHIRT

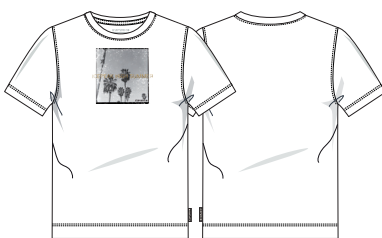
Size: 110/116 - 170/176, BL: 55 cm

Materials: 100% CO

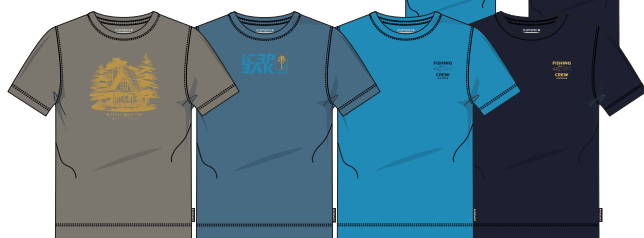
Delivery week: 8

Price: 12,99€

Same as S5/ SS 2024
with new prints



980 ¹



275 ¹

369 ²

330

390 ²

ICEPEAK MELSTONE JR

7 51 525 513

B SWIM SHORTS

Size: 110-116 ---- 170-176, IS: 12 cm

Materials: 100% PES (W)

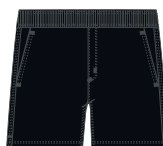
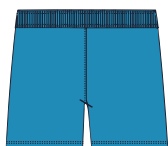
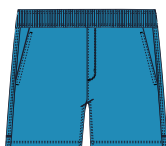
Features:

- Regular fit
- Regular waist
- Drawstring waist
- Elastic waist
- Two front pockets

Delivery week: 8

Price: 24,99€

Same as S5/ SS 2024



330 ²

990 ¹

ICEPEAK KALAMAZOO JR

7 50 011 521

B SHELL JACKET

Size: 116-176, BL: 58 cm

Materials: 100% PES (W)

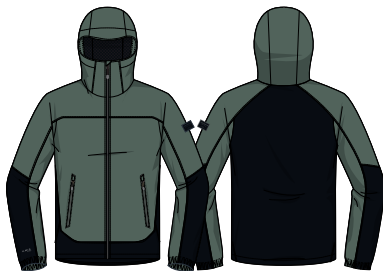
Lining: 100% PES

Features:

- Regular fit
- Shaped hem
- Articulated elbows
- Fixed hood
- Adjustable hood
- Elastic cuffs
- Two zipped front pockets
- Zipped chest pocket
- Chin guard on the front zip
- Breathable mesh lining

Delivery week: 8

Price: 49,99€



585/990 ¹
front zippers col.990
pocket zippers col.585
mesh lining: 990



439/275 ²
front zippers col.990
pocket zippers col.439
mesh lining: 990



330/390
front zippers col.990
pocket zippers col.330
mesh lining: 990



990/990
front zippers col.990
pocket zippers col.990
mesh lining: 990

ICEPEAK KENOSHA JR

7 50 017 501

B SHELL JACKET

Size: 116-176, BL: 56 cm

Materials: 100% PES (W)

Lining: 100% PES

Features:

- Regular fit
- Shaped hem
- Fixed hood
- Adjustable hem
- Adjustable cuffs
- Two zipped front pockets
- Wind placket
- Chin guard on the front zip
- Breathable mesh lining

Delivery week: 8

Price: 69,99€

Same as S5/ SS 2024



330
reversed zips: 990
mesh lining: 990



585 ¹
reversed zips: 990
mesh lining: 990



990
reversed zips: 990
mesh lining: 990

ICEPEAK KEMPTON JR

7 51 807 568

B LIGHT SOFTSHELL JACKET

Size: 116-176, BL: 56 cm

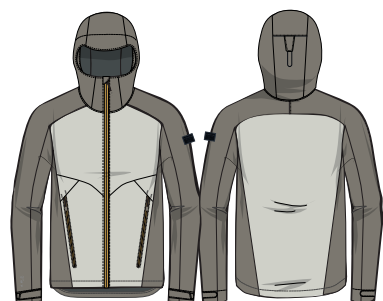
Materials: 100% PES (W)

Features:

- Regular fit
- Adjustable fixed hood.
- Shaped hem
- Two zipped front pockets
- Wind placket
- Chin guard on the front zip

Delivery week: 8

Price: 59,99€



275/022 ²
zippers col.439
shell 275/backside 270
shell 022/backside 270



585/585 ¹
zippers col.585
shell 585/backside 270



330/330
zippers col.330
shell 330/backside 270

ICEPEAK KELLER JR

7 51 805 544

B SOFTSHELL JACKET

Size: 116-176, BL: 59 cm

Materials: 100% PES (W)

Features:

- Regular fit
- Detachable and adjustable hood
- Adjustable cuffs
- Two zipped front pockets
- Wind placket
- Chin guard on the front zip

Delivery week: 8

Price: 69,99€



330/390
zippers col.330
shell 330/backside 290
shell 390/backside 390



439/390 ¹
zippers col.439
shell 439/backside 290
shell 390/backside 390



990/990 ²
zippers col.990
shell 990/backside 290
shell 990/backside 290

ICEPEAK KLINE JR

7 51 897 694

7 51 897 694 IO col.990,390

B SOFTSHELL JACKET

Size: 116-176, BL: 56 cm

Materials: 100% PES (K)

Features:

- Regular fit
- Fixed hood
- Elastic cuffs
- Two zipped front pockets
- Wind placket
- Chin guard on the front zip

04



Delivery week: 8

Price: I/O:49,99€

Same as S5/ SS 2024



439/275¹

zippers 390
shell 439/backside 290
shell 275/backside 290

585/585

zippers 990
shell 585/backside 565

931/931

zippers 369
shell 315/backside 369

369/369²

zippers 390
shell 369/backside 315



330/933¹

zippers 990
shell 330/backside 290
shell 990/backside 330

933/933

zippers 330
shell 990/backside 330

943/943

zippers 390
shell 390/backside 439

990/990

zippers 990
shell 990/backside 290

390/390

zippers 390
shell 390/backside 390

ICEPEAK KINGWOOD JR

7 51 895 844

B PRINTED SOFTSHELL JACKET

Size: 116-176, BL: 56 cm

Materials: 100% PES (K) (printed Q694)

Features:

- Regular fit
- Shaped hem
- Adjustable fixed hood
- Elastic cuffs
- Two zipped front pockets
- Wind placket
- Chin guard on the front zip



275/990¹

zippers col.990
shell 275/backside 431
shell 990/backside 990



Delivery week: 8

Price: 49,99€

ICEPEAK KANORADO JR

7 51 915 572

B STRETCH SOFTSHELL JACKET

Size: 116-176, BL: 54 cm

Materials: 100% PES (W)

Features:

- Regular fit
- Fixed hood
- Elastic cuffs
- Two zipped front pockets
- Zipped sleeve pocket
- Wind placket
- Chin guard on the front zip



330

reversed front zip: 990
reversed pocket zip: 439
welding tape: 990 matte
shell 330/backside 290

817¹

reversed front zip: 990
reversed pocket zip: 439
welding tape: 990 matte
shell 817/backside 290

390²

reversed front zip: 990
reversed pocket zip: 439
welding tape: 990 matte
shell 390/backside 290



Delivery week: 8

Price: 49,99€

Same as S5/ SS 2024

ICEPEAK KABWE JR

7 51 002 542 IO

JR SOFTSHELL TROUSERS

Size: 116-176, IS: 64 cm

Materials: 97% PES, 3% EL (W)

Features:

- Regular fit.
- Regular waist.
- Adjustable waist.
- Elastic back waistband.
- Adjustable leg bottoms.
- Articulated knee construction.
- Beltloops.
- Two zipped front pockets.

04

CLASSIC

Delivery week: 8

Price: 49,99€

Same as S5/ SS 2024



390¹
pocket zip 390

990
pocket zip 990



ICEPEAK KEO JR

7 51 090 682

JR SOFTSHELL TROUSERS

Size: 116-176, IS: 62 cm

Materials: 95% PES, 5% EL (W)

Features:

- Regular fit.
- Regular waist.
- Adjustable waist.
- Elastic waistband.
- Adjustable leg bottoms.
- Articulated knee construction.

04

Delivery week: 8

Price: 39,99€



990¹

390²



ICEPEAK LOWVILLE JR

7 51 205 526

B STRETCH TROUSERS

Size: 116-176, IS: 60 cm

Materials: 100% PES (W)

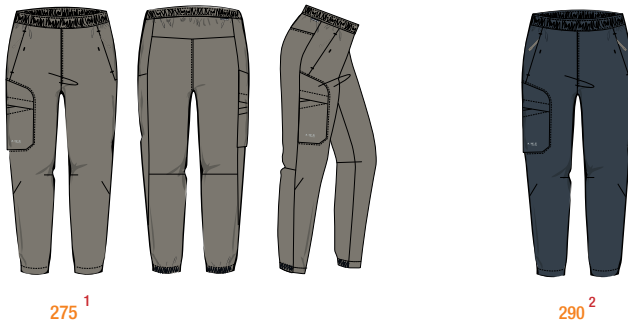
Lining: 100% PES (pocket pouches)

Features:

- Regular fit
- Regular waist
- Elastic waistband
- Articulated knees
- Two zipped front pockets
- Elastic leg bottoms

Delivery week: 8

Price: 49,99€



275¹

290²



ICEPEAK LORETTO JR

7 51 541 526

B STRETCH SHORTS

Size: 116-176, IS: 16 cm

Materials: 100% PES (W)

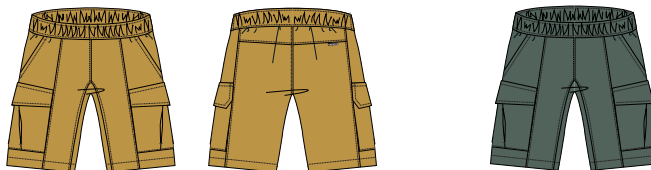
Lining: 100% PES (pocket pouches)

Features:

- Regular fit
- Regular waist
- Elastic waistband
- Two front pockets
- Cargo pockets

Delivery week: 8

Price: 44,99€



439²

585¹



ICEPEAK KAYES JR

7 51 008 522

B STRETCH ZIP-OFF TROUSERS

Size: 116-176, IS: 16 cm / 62 cm
Materials: 90% PES, 10% EL (W)

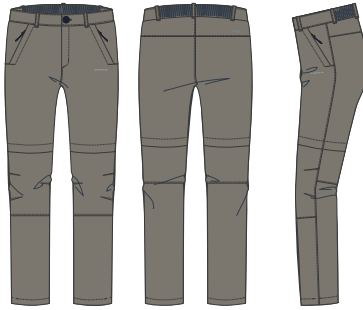
Features:

- Regular fit
- Regular waist
- Adjustable waist
- Elastic back waistband
- Adjustable leg bottoms
- Articulated knee construction
- Zip-off leg bottoms
- Two zipped front pockets

Delivery week: 8

Price: 49,99€

Same as S5/ SS 2024



275¹



390



990²

JUNIORS / OUTDOOR HIKING / Boys

ICEPEAK KOSTI JR

7 51 011 522

B STRETCH TROUSERS

Size: 116-176, IS: 62 cm
Materials: 90% PES, 10% EL (W)

Features:

- Regular fit
- Regular waist
- Adjustable waist
- Elastic back waistband
- Two zipped front pockets
- Adjustable leg bottoms
- Articulated knee construction

Delivery week: 8

Price: 44,99€

Same as S5/ SS 2024



390²



585¹



290

ICEPEAK KONZ JR

7 51 527 522

B STRETCH SHORTS

Size: 116-176, IS: 18 cm
Materials: 90% PES, 10% EL (W)

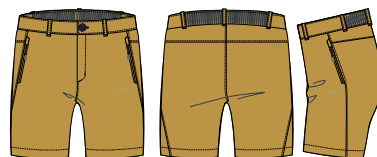
Features:

- Regular fit
- Regular waist
- Adjustable waist
- Elastic back waistband
- Two zipped front pockets

Delivery week: 8

Price: 39,99€

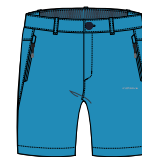
Same as S5/ SS 2024



439¹



585



330²



390

ICEPEAK KEOTA JR

7 51 773 615

B MIDLAYER JACKET

Size: 110/116 - 170/176, BL: 52 cm

Materials: 100% PES (K)

Features:

- Regular fit
- Fixed hood
- Elastic cuffs
- Elastic hem
- Two zipped front pockets
- Chin guard on the front zip

Delivery week: 8

Price: 44,99€

THERMAL



565/585¹
zippers 585
lycra bands 585



817/810
zippers 290
lycra bands 290



330/369²
zippers 369
lycra bands 369

ICEPEAK KOBUK JR

7 51 885 599

B FLEECE JACKET

Size: 110/116 - 170/176, BL: 53 cm

Materials: 100% PES (K)

Features:

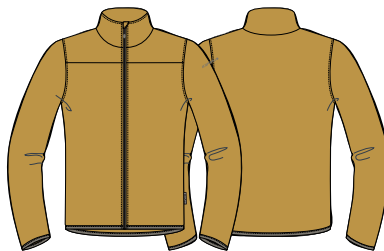
- Elastic cuffs
- Elastic hem
- Chin guard on the front zip

Delivery week: 8

Price: 29,99€

Same as S5/ SS 2024

THERMAL



439¹



390²



330

ICEPEAK KEVELAER JR

7 51 875 664

B MIDLAYER JACKET

Size: 110/116 - 170/176, BL: 52 cm

Materials:

Q664: 100% PES (K)

Q684: 92% PES, 8% EL (K)

Features:

- Two zipped front pockets
- Zipped sleeve pocket
- Elastic cuffs

Delivery week: 8

Price: 39,99€

Same as S5/ SS 2024

THERMAL



022/990
pocket zips: 990
sleeve pocket zip: 439
elastic bindings: 990



585/585¹
pocket zip: 565
sleeve pocket zip: 565
elastic bindings: 990



330/990²
pocket zips: 990
sleeve pocket zip: 439
elastic bindings: 990

ICEPEAK KERSHAW JR

7 51 779 612

JR O-NECK SHIRT

Size: 110/116 - 170/176, BL: 51 cm

Materials: 94% PES, 6% EL (K)

Features:

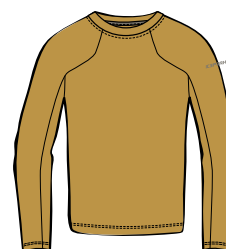
- Regular fit
- Round neck

Delivery week: 8

Price: 24,99€



290¹



439²

ICEPEAK KINSTON JR

7 51 771 689

B T-SHIRT

Size: 110/116 - 170/176, BL: 52 cm

Materials: 65% recycled PES, 35% CO (K)

Features:

- Regular fit
- Round neck

Delivery week: 8

Price: 19,99€

Same as S5/ SS 2024
with new prints



JUNIORS / OUTDOOR HIKING / Boys

ICEPEAK KINROSS JR

7 51 701 590

B PIQUE SHIRT

Size: 110/116 - 170/176, BL: 52 cm

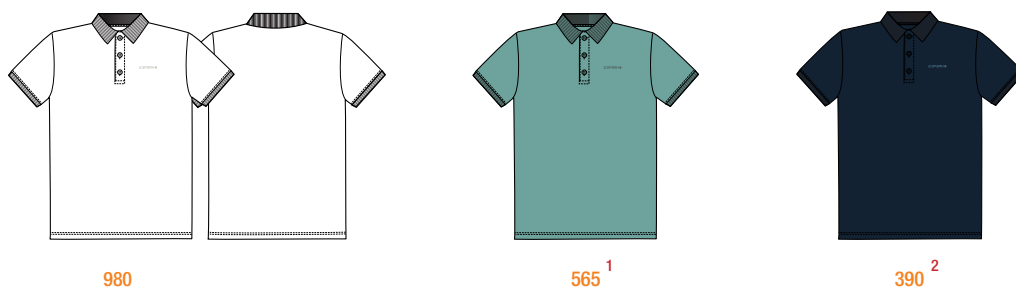
Materials: 100% recycled PES (K)

Features:

- Regular fit
- Half button front

Delivery week: 8

Price: 19,99€



ICEPEAK KEMBERG JR

7 51 724 646

B T-SHIRT

Size: 110/116 - 170/176, BL: 51 cm

Materials: 100% PES (K)

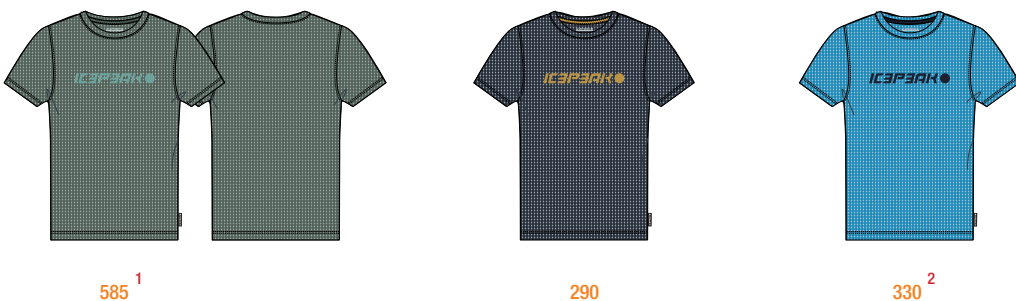
Features:

- Regular fit
- Round neck

Delivery week: 8

Price: 12,99€

Same as S5/ SS 2024



ICEPEAK KINCAID JR

7 51 717 626

B T-SHIRT

Size: 110/116 - 170/176, BL: 52 cm

Materials: 100% PES (K)

Features:

- Regular fit
- Round neck

Delivery week: 8

Price: 16,99€

Same as S5/ SS 2024
with new prints



ICEPEAK JAL KD

7 50 025 521
KD SHELL JACKET

Size: 92-122, BL: 49cm
Materials: 100% PES (W)
Lining: 100% PES

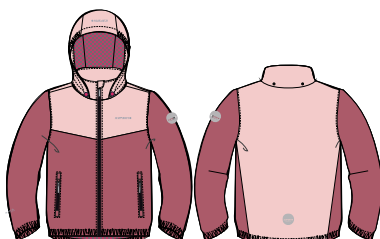
Features:

- Breathable mesh lining.
- Longer and protective back hem.
- Articulated elbow construction.
- Detachable hood.
- Two zipped front pockets.

Delivery week: 8

Pre-sales ends 18.8.24

Price: 54,99€



637/605¹
front zip 635/637
pocket zip 635/637
lining 635

ICEPEAK JOICE KD

7 51 869 817
KD PRINTED SOFTSHELL JACKET

Size: 92-122, BL: 48cm
Materials: 100% PES (K)

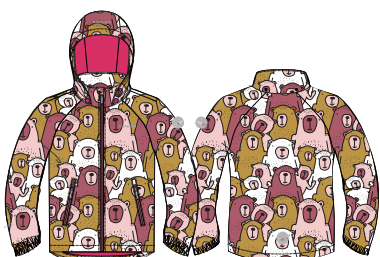
Features:

- Longer and protective back hem.
- Articulated elbow construction.
- Detachable hood.
- Two zipped front pockets.

Delivery week: 8

Pre-sales ends 18.8.24

Price: 49,99€



637¹
zip 637
reverse side 635

ICEPEAK JENETT KD

7 51 868 694
KD SOFTSHELL JACKET

Size: 92-122, BL: 49cm
Materials: 100% PES (K)

Features:

- Longer and protective back hem.
- Articulated elbow construction.
- Detachable hood.
- Two zipped front pockets.

Delivery week: 8

Pre-sales ends 18.8.24

Price: 39,99€



635/637
Front zip 605/635
Pocket zip 605
635 = shell 635/637 backside
637 = shell 637/605 backside



431/431¹
Front zip 635/431
Pocket zip 635
431 = shell 431/605 backside

ICEPEAK JEMISON KD

7 51 033 682
KD SOFTSHELL TROUSERS

Size: 92-122, IS: 46cm
Materials: 95%PES, 5%EL (W)

Features:

- Articulated knee construction.
- Elastic waist.
- Adjustable leg bottoms.

Delivery week: 8

Pre-sales ends 18.8.24

Price: 29,99€



990



390¹

ICEPEAK JITRA KD

7 51 061 522

KD STRETCH TROUSERS

Size: 92-122, IS: 46cm

Materials: 90% PES, 10% EL (K)

Features:

- Articulated knee construction.
- Elastic waist.
- Adjustable leg bottoms.
- Two zipped front pockets.

Delivery week: 8

Pre-sales ends 18.8.24

Price: 34,99€



637¹
pocket zip 637

330¹
pocket zip 330

290¹
pocket zip 290

390¹
pocket zip 390

PLAYGROUND / ICECREAM / Girls

ICEPEAK JUPITER KD

7 51 836 599

KD FLEECE JACKET

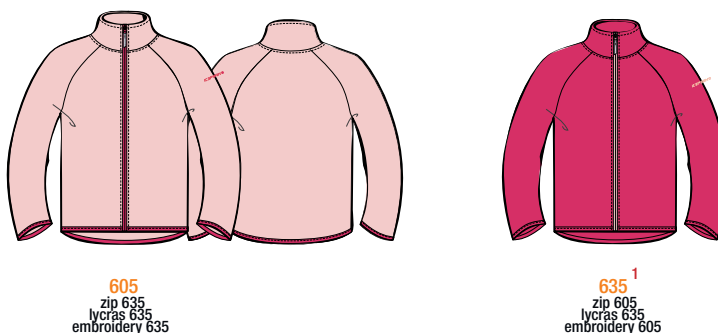
Size: 86/92-122/128, BL: 44cm

Materials: 100% PES (K)

Delivery week: 8

Pre-sales ends 18.8.24

Price: 29,99€



605¹
zip 635
lycras 635
embroidery 635

635¹
zip 605
lycras 635
embroidery 605

ICEPEAK JAMBI KD

7 51 710 689

KD T-SHIRT

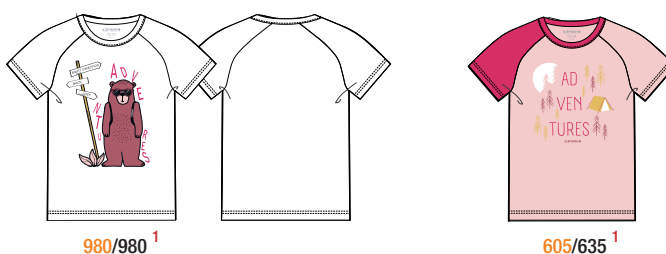
Size: 86/92-122/128, BL: 44cm

Materials: 65% recycled PES, 35% CO (K)

Delivery week: 8

Pre-sales ends 18.8.24

Price: 16,99€



980/980¹

605/635¹

ICEPEAK JAU KD

7 51 500 522

KD STRETCH SHORTS

Size: 92-122, IS: 11cm

Materials: 90% PES, 10% EL (K)

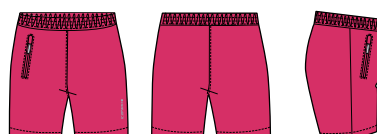
Features:

- Elastic waist.
- Front pocket.

Delivery week: 8

Pre-sales ends 18.8.24

Price: 29,99€



635¹
pocket zip 635

ICEPEAK JAL KD

7 50 025 521
KD SHELL JACKET

Size: 92-122, BL: 49cm
Materials: 100% PES (K)
Lining: 100% PES

Features:

- Breathable mesh lining.
- Longer and protective back hem.
- Articulated elbow construction.
- Detachable hood.
- Two zipped front pockets.

Delivery week: 8

Pre-sales ends 18.8.24

Price: 54,99€



390/315¹
front zip 315/390
pocket zip 315/390
lining 315

ICEPEAK JOICE KD

7 51 869 817
KD PRINTED SOFTSHELL JACKET

Size: 92-122, BL: 48cm
Materials: 100% PES (K)

Features:

- Longer and protective back hem.
- Articulated elbow construction.
- Detachable hood.
- Two zipped front pockets.

Delivery week: 8

Pre-sales ends 18.8.24

Price: 49,99€



369¹
zip 439
reverse side 330

ICEPEAK JENETT KD

7 51 868 694
KD SOFTSHELL JACKET

Size: 92-122, BL: 49cm
Materials: 100% PES(K)

Features:

- Longer and protective back hem.
- Articulated elbow construction.
- Detachable hood.
- Two zipped front pockets.

Delivery week: 8

Pre-sales ends 18.8.24

Price: 39,99€



439/943¹
Front zip 431/439
Pocket zip 431
439 = shell 439/943 backside
943 = shell 390/439 backside



939/931
Front zip 315/390
Pocket zip 315
939 = shell 390/315 backside
931 = shell 315/369 backside

ICEPEAK JEMISON KD

7 51 033 682
KD SOFTSHELL TROUSERS

Size: 92-122, IS: 46cm
Materials: 95% PES, 5% EL(W)

Features:

- Articulated knee construction.
- Elastic waist.
- Adjustable leg bottoms.

Delivery week: 8

Pre-sales ends 18.8.24

Price: 29,99€



990



390¹

ICEPEAK JITRA KD

7 51 061 522

KD STRETCH TROUSERS

Size: 92-122, IS: 46cm

Materials: 90% PES, 10% EL (W)

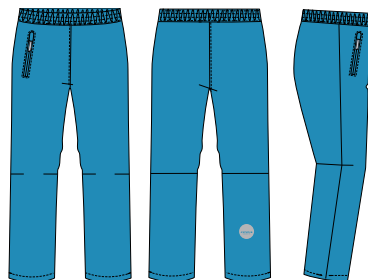
Features:

- Articulated knee construction.
- Elastic waist.
- Adjustable leg bottoms.
- Two zipped front pockets.

Delivery week: 8

Pre-sales ends 18.8.24

Price: 34,99€



330¹
pocket zip 330



290
pocket zip 290

390
pocket zip 390

PLAYGROUND / ICECREAM / Boys

ICEPEAK JUPITER KD

7 51 836 599

KD FLEECE JACKET

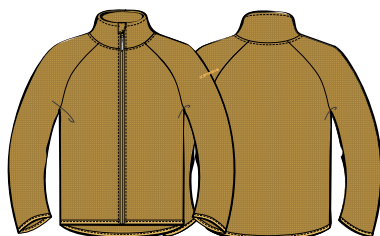
Size: 86/92 - 122/128, BL: 44cm

Materials: 100% PES (K)

Delivery week: 8

Pre-sales ends 18.8.24

Price: 29,99€



439
zip 431
lycras 431
embroidery 431



330¹
zip 390
lycras 390
embroidery 390

ICEPEAK JAMBI KD

7 51 710 689

KD T-SHIRT

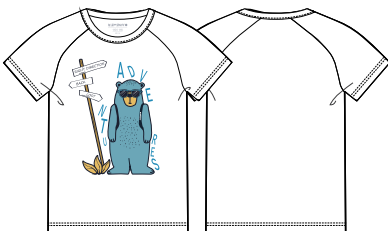
Size: 86/92 - 122/128, BL: 44cm

Materials: 65% recycled PES, 35% CO (K)

Delivery week: 8

Pre-sales ends 18.8.24

Price: 16,99€



981=980/980¹



330/390¹

ICEPEAK JAU KD

7 51 500 522

KD STRETCH SHORTS

Size: 92-122, IS: 11cm

Materials: 90% PES, 10% EL (K)

Features:

- Elastic waist.
- Front pocket.

Delivery week: 8

Pre-sales ends 18.8.24

Price: 29,99€



390¹
pocket zip 390

SYMBOLS

A.W.S. Active Wear System

Active Wear System – is the collection of technologies and functions that are used to ensure optimal user experience in various activities. The main A.W.S. categories help one find the best products to suit different needs, preferences and intended uses.



A.W.S. PRO is designed for active sports enthusiasts who want the best for the toughest conditions. The most technical products meet the highest standards for quality and functionality.



A.W.S. EXTREME The product meets the needs of active outdoor people even in extreme conditions. Structural details and protective materials make the product functional in every situation, no matter the weather.



A.W.S. ACTIVE Functionality and comfort have been paid special attention to in the design process, which makes the product fit for both energetic and relaxed activities.



A.W.S. RAIN The waterproof A.W.S. RAIN product keeps you dry on rainy days.



20 000 / 20 000

Technical values of the fabric: 20 000 mm / 20 000 mvp (water column / breathability). *



20 000 / 10 000

Technical values of the fabric: 20 000 mm / 10 000 mvp (water column / breathability). *



15 000 / 15 000

Technical values of the fabric: 15 000 mm / 15 000 mvp (water column / breathability). *



15 000 / 10 000

Technical values of the fabric: 15 000 mm / 10 000 mvp (water column / breathability). *



10 000 / 10 000

Technical values of the fabric: 10 000 mm / 10 000 mvp (water column / breathability). *



10 000 / 8 000

Technical values of the fabric: 10 000 mm / 8 000 mvp (water column / breathability). *



10 000 / 5 000

Technical values of the fabric: 10 000 mm / 5 000 mvp (water column / breathability). *



10 000 / 3 000

Technical values of the fabric: 10 000 mm / 3 000 mvp (water column / breathability). *



8 000 / 3 000

Technical values of the fabric: 8 000 mm / 3 000 mvp (water column / breathability). *



8 000 / 5 000

Protective and comfortable garments for active outdoor life. *



5 000 / 5 000

Technical values of the fabric: 5 000 mm / 5 000 mvp (water column / breathability). *



3 000 / 3 000

Technical values of the fabric: 3 000 mm / 3 000 mvp (water column / breathability). *



10 000 /

Water column of the fabric: 10 000 mm. *



5 000 /

Water column of the fabric: 5 000 mm. *



3 000 /

Water column of the fabric: 3 000 mm. *



/ 15 000

Breathability of the fabric: 15 000 mvp.



SOFTSHELL

A functional material for a wide range of outdoor activities. The product provides weather protection while being comfortably flexible at the same time.



2½-LAYER

Made of a 2,5-layer fabric, in which the shell fabric is bonded to a waterproof and breathable membrane. An embossed printing pattern covers the membrane, protecting it from abrasion.



3-LAYER

The lining has been laminated to the outer material to create an extra lightweight product that is ideal for layering.



2-LAYER

Made of a 2-layer fabric, in which a waterproof membrane is bonded to a multifunctional material.



2-WAY STRETCH

The material increases the freedom of movement.



4-WAY STRETCH

The material stretches to all directions giving a maximum freedom of movement.



SEAMLESS

Special elastic knit for maximum comfort without irritating seams.



WINDPROOF

Provides optimal wind protection and warmth.

**WATER-REPELLENT**

The fabric surface has been treated with a water-repellent finish.

**BREEZE STOP**

Made of light and windproof, yet breathable material.

**CHLORINE RESISTANCE**

Colours remain bright, and the elasticity of the material lasts longer.

**TAPED SEAMS**

All seams have been taped to make the product perfectly waterproof.

**CRITICAL SEAMS TAPED**

The most critical seams of this product have been taped waterproof.

**COOLTECH**

Ensures the best possible moisture transfer during intense activities and keeps you dry.

**DRY**

The fabric allows moisture to evaporate quickly.

**QUICK DRY**

Dries quickly and can be washed in low temperatures

**THERMOSTRETCH**

Lightweight, moisture-wicking 4-way stretch material that keeps you dry and provides warmth.

**THERMAL**

Warm and lightweight material that dries quickly.

**ANTIBACTERIAL**

Keeps the fabric fresh, odourless and comfortable for a long time.

**ANTI PILLING**

Reduces the forming of pills on the fabric.

**HAND-MADE**

Parts of the product are hand-made.

**GENUINE LEATHER**

Made of genuine leather.

**LEATHER DETAILS**

There are leather details in the product.

**TOUCHSCREEN GLOVES**

Fingertip conductivity allows you to operate any touchscreen device without having to take off gloves and exposing your hands to cold conditions.

**SUPER SOFT TOUCH**

Extra fine fibres make the insulation very light and soft. Good thermal capacity.

**REVERSIBLE**

The product can be turned inside out for a new look.

**VENTILATION**

Extra ventilation in areas where perspiration is highest to maximise breathability and comfort.

**REFLECTIVE ELEMENTS**

The product includes reflective elements. Note that this product is not a reflector and does not replace a reflector or a reflective vest. Always wear a separate reflector when out in the dark.

**CLEANER**

Goggle pocket with a lens cloth.

**CHILDREN'S SAFETY**

The product has been made according to children's safety regulations.

**DURABLE**

Owing to reinforced material in critical parts, the product is very durable even in heavy use.

**HYBRID**

This hybrid garment is made of a combination of different materials in order to strike a balance between protection, comfort and functionality.

**MADE IN FINLAND****SHORTER LENGTH**

Shorter inseams.

**-20°C**

Shows the temperature in which the product keeps the child warm. This only serves as a guideline since the sense of warmth and cold is always subjective in nature.

**STITCHLESS**

Stitchless quilting.

**SYSTEM ZIP**

The special system zips allow you to attach an additional layer to a specific outer jacket. The compatible products are marked with this symbol.

**TEMPERATURE CONTROL**

The internal thermometer shows the temperature inside the product and allows you to make sure that your child stays warm.

**FIXED ASSORTMENT****PACKABLE**

Designed to be packed away into its own pocket or an attached pouch for convenient storage and easy carrying while on the move.

**GRAPHENE**

Enhanced with graphene, a high-tech nanomaterial that allows the fabric to distribute heat from the warmer areas of your body to the cooler parts. In addition, graphene has antibacterial properties.

**RECYCLED MATERIALS AND FIBRES**

The product contains recycled materials.

**WOOD FIBRE**

This product contains wood fibre, which is a renewable, recyclable and biodegradable material that leaves a significantly smaller environmental footprint than traditional textile fibres.

**CONSCIOUS COTTON**

Conscious cotton production is based on socially sustainable practices and compliance with strict environmental standards.

**NATURAL**

The product contains natural fibres.

**BAMBOO VISCOSE**

Bamboo viscose is a soft fabric offering built-in temperature control and moisture-absorbing properties that translate to high wear comfort.

**WOOL**

The product contains natural wool, a delightfully warm and soft material.

**MERINO WOOL**

The exceptionally soft and moisture-wicking merino wool provides warmth in the cold, even when wet. The non-itchy natural material is an excellent choice for a sensitive skin.

**PFC FREE**

The water-repellent finish doesn't contain perfluorinated compounds.

**DOWN**

The padding is made of natural down that provides excellent thermal insulation in relation to its light weight.

**DOWN IMITATION**

The padding is made of down imitation that provides excellent thermal insulation in relation to its light weight.

**NO DOWN, NO FUR, NO FLEECE****PLUS SIZE**

Jackets: A slightly looser fit.
Trousers: A slightly looser fit and shorter inseams.

**PLUS SIZE**

A little wider C+ fit.

**BIG SIZE**

A wider size range with bigger sizes.

**D-FIT**

Spacious D-fit.

**PLANT BASED STRETCH**

Partly plant-based material gives the fabric natural elasticity.

**NEVER OUT OF STOCK****NEVER OUT OF STOCK****CLASSIC**

Symbol for continuing essentials.

**KEEP SMS**

This is a continuing product. Keep the salesman sample for the next season.

**THINSULATE**

The 3M™ Thinsulate™ insulation keeps you warm in the coldest of weathers. It is warm yet lightweight, powerful yet thin.

**COOLMAX®**

Coolmax® technology keeps you dry and comfortable by wicking moisture away from the skin.

**THE RECCO® TECHNOLOGY**

The RECCO Rescue System is a two-part technology. Ski resorts and rescue teams have RECCO detectors. The detector sends out a directional search signal which is echoed back by the RECCO reflector in this garment.

Made with

**DUPONT SORONA® INSULATION**

Contains partially bio-based Sorona® polymer, which is mechanically recyclable with PET at the lab scale.

**SORONA AGILE® INSULATION**

Contains partially bio-based Sorona® polymer, which is mechanically recyclable with PET at the lab scale.

**THERMOLITE ECOMADE**

The insulation of the product is made with THERMOLITE® EcoMade T-DOWN technology that provides lightweight warmth and offers a sustainable alternative to down, originating from 100% recycled PET bottles.

**THERMORE ECODOWN**

Thermore® Ecodown® is a down alternative made of 100% recycled fibres. Ecodown® is extremely warm and lofty and it can withstand repeated washings without clumping or cold spots.

**THERMORE THERMAL BOOSTER**

Thermore® Thermal Booster is a unique smart insulation material that becomes warmer as the temperature drops. It doesn't need any special maintenance and can be machine washed.

**GORE-TEX**

GORE-TEX products guarantee to keep you dry: They are 100% waterproof, 100% windproof and extremely breathable.

**WINDSTOPPER®**

WINDSTOPPER® products by GORE-TEX LABS are totally windproof, water-resistant and very breathable – designed to offer next-level comfort during vigorous activities.

**PRIMALOFT**

PrimaLoft is a synthetic, microfibre material for thermal insulation. PrimaLoft is warmer, drier, softer and more compressible than other insulations.

PRIMALOFT DOWN BLEND

The blend of water-repellent duck down and ultra-fine PrimaLoft microfibre retains its thermal capacity even when wet. The packable and lightweight blend dries four times faster than untreated down and clumps less when drying. These features make PrimaLoft a perfect insulator for staying outdoors all night long. This insulation is water-resistant, compressible and longer-lasting than pure-down options.

**REPREVE**

Contains REPREVE® polyester made from 100% recycled materials, including post-consumer plastic bottles.

**REPREVE OUR OCEAN**

Includes REPREVE® Our Ocean™ recycled polyester fibres, made from post-consumer plastic bottles that have been sourced near coastal areas and waterways where they are at a high risk of entering the ocean.

**BIONIC-FINISH® ECO**

Impregnated with BIONIC-FINISH® ECO that is a PFC-free water-repellent finish for ultimate performance.

**FAIR TRADE**

Selling more of their cotton on Fairtrade terms under the Fairtrade Sourced Cotton model enables Fairtrade cotton producers to get fairer trading conditions, stimulate social change and engage in environmental protection. For more info, visit info.fairtrade.net. Through the Fairtrade Sourced Cotton model, Torstai has sourced the same amount of Fairtrade cotton as needed for the Torstai Fairtrade Collection.

**LENZING™ ECOVERO™**

Contains LENZING™ ECOVERO™ viscose fibres derived from certified renewable wood sources using an eco-responsible production process.

**TENCEL™**

Contains TENCEL™ cellulosic fibres derived from sustainably managed forests.

THERMOLITE® is a trademark of The LYCRA Company